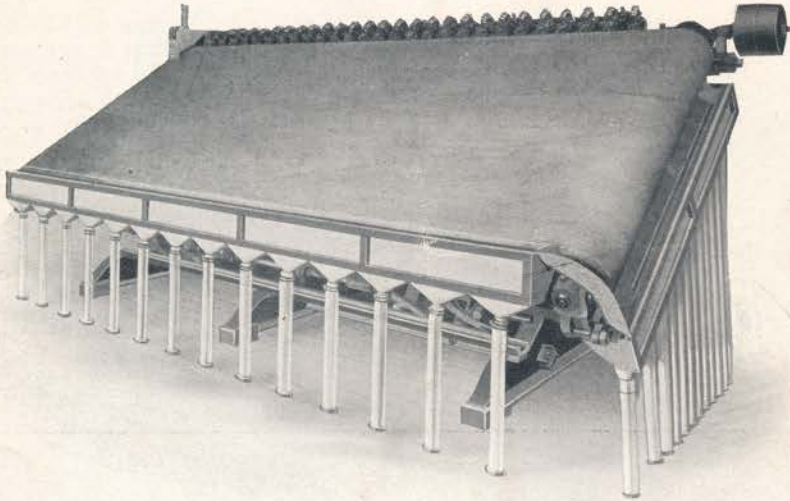


# SUTTON, STEELE & STEELE

## SCREENLESS SIZER

Patents Pending in United States  
and Foreign Countries



### The Wonder of the Age

**Produces 12, 24, 36 or More Sizes in One  
Continuous Operation**

Does better work than any screens. Sizes any free dry pulver-  
ant mass containing 4 mesh or even larger down to 200 mesh or  
finer, same operation.

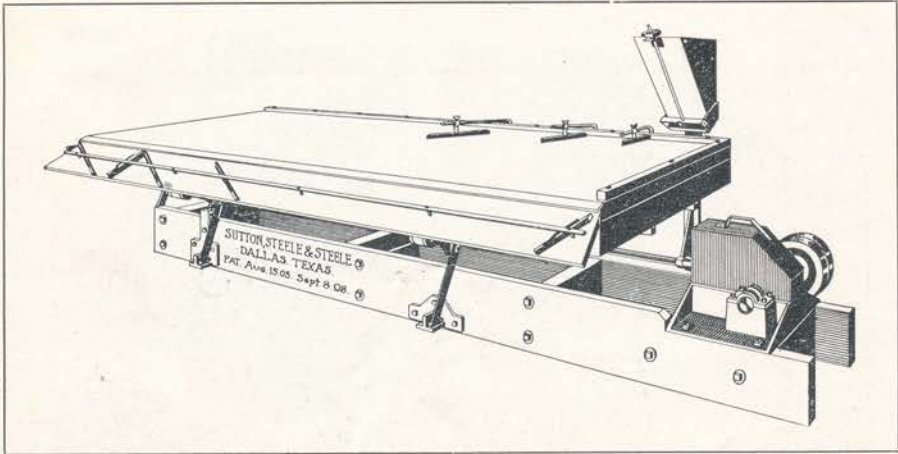
Capacity from 25 to 150 tons in 24 hours, according to mesh and  
gravity. Requires little attention or up-keep, and less than two  
horsepower to operate. Has no vibration. Can be installed any  
place. Solves the sizing problem.

We now have them in use in our Denver mill and are *prepared  
to show you.*

Our charges for testing are reasonable and are deducted from  
purchase of machines.

# SUTTON, STEELE & STEELE

## STANDARD TABLE



One of three valuable tables in our process with capacities from 10 to 15 tons on material all through 200 mesh, up to 200 tons on 4 mesh in 24 hours, and separates practically any free dry pulverant materials that have a difference in specific gravity of as much as one-half of one point.

Our static electric machines separate many minerals successfully where the gravities are practically the same, such as graphite and mica, molybdenum and its gangue, pyrites and chalcopyrites from zinc, fluorspar from zinc, barite from zinc and dozens of others.

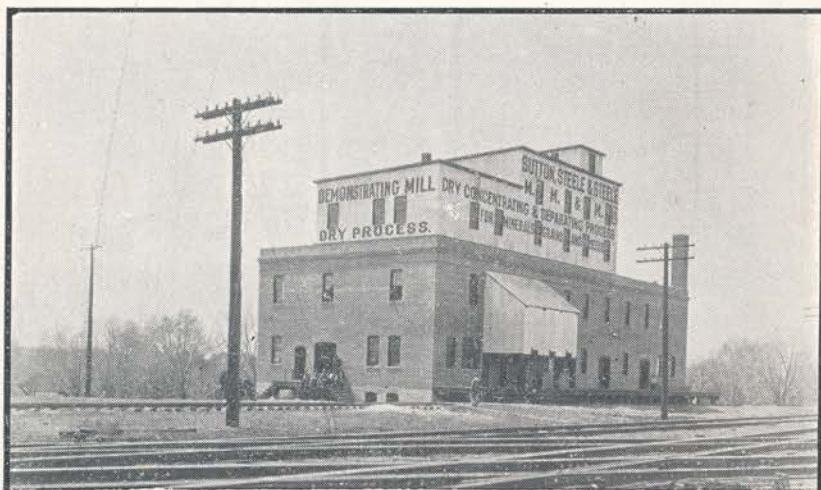
We have these machines all in use in our Denver mill and are prepared to show you.

**We will finance mills on properties with  
proven values and tonnage.**

# SUTTON, STEELE & STEELE

## Demonstrating and Custom Mill

### DENVER



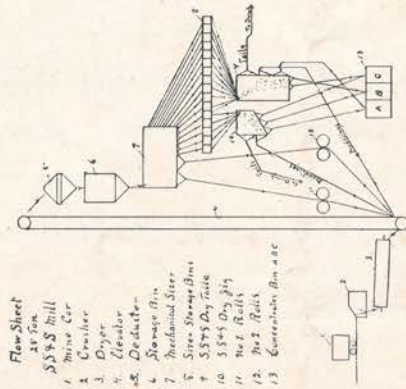
**In Daily Operation Treating Successfully the  
Most Difficult Complex Ores to Be Found**

We guarantee to make a higher saving than any wet tables on any complex ore, and treat commercially successful hundreds of mineral combinations that wet tables cannot so treat at all.

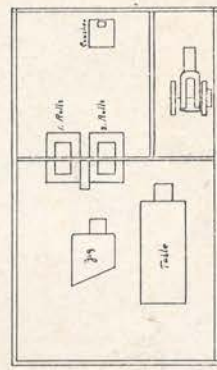
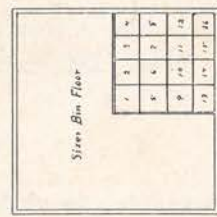
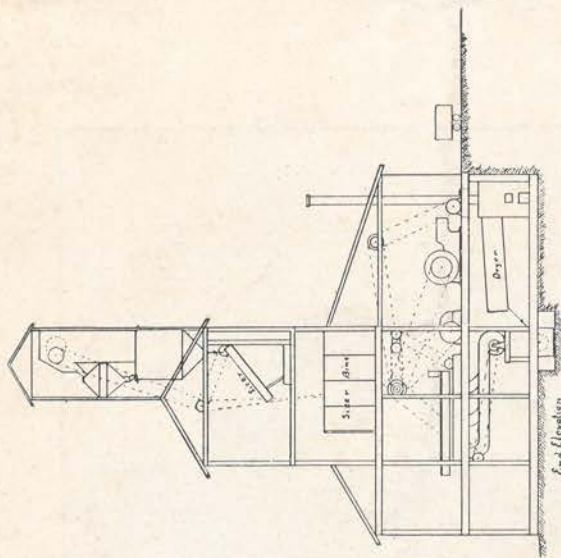
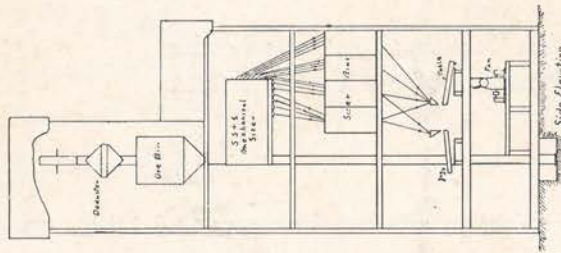
Our process uses no water. Each machine has very large capacity, consequently requires few machines, very small building and few attendants for any desired tonnage.

We have them all in use in our Denver mill and are *prepared to show you.*





- Flow Sheet  
 25 Ton  
 S.S.S. Mill  
 1 Mine Car  
 2 Crusher  
 3 Dryer  
 4 Elevator  
 5 Deductor  
 6 Storage Bin  
 7 Mechanical Sizer  
 8 Sizer Storage Bin  
 9 S.S.S. Dry Table  
 10 S.S.S. Dry Bin  
 11 Hot Rolls  
 12 Hot Rolls  
 13 Concentrator Bin a b c



Sutton Steele & Steele  
 Denver, Colo. 7 Dallas Texas  
 Flow Sheet & Preliminary Plans  
 for 25 to 50 Ton Capacity  
 Semi-portable Dry Concentrating Plant  
 Designed by C. W. Steele  
 Lead Engineer  
 L. A. Steele  
 Engineer

Flow Sheet of Sutton, Steele & Steele Semi-Portable Prospect or Small Mine Mill. Capacity 25 to 50 Tons Per 24 Hours, According to Character of Ore. Cost to Install Complete, Ready to Operate, Including Building, Machinery, Power and Everything Else, Fifteen to Twenty Thousand Dollars, Depending on Location and Character of Ore.  
 SUTTON, STEELE & STEELE, DENVER.