



# MAINTENANCE TIPS

## Slipstick® Horizontal Motion Conveyor



Below is a brief outline of the most important maintenance operations. If further detail is required, refer to the owners manual or call your Slipstick Conveyor service department.

### LUBRICATION

Lubrication of your Slipstick is very important for long bearing life. The correct lubrication schedule for both the grease and gear lubricant is:

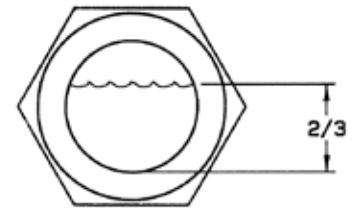
Grease - once after initial 100 hours of service and then every 500 hours or six weeks, whichever comes first.

Gear lubricant - change after initial 100 hours of service and then every 3,000 hours or six months, whichever comes first.

The proper procedures are outlined below:

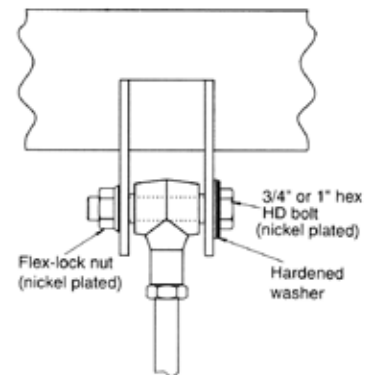
#### Gear Lubricant

With the unit stopped and a catch pan located under the gear side oil drain plug, unscrew the oil drain plug and upper filler plug and allow the gear lubricant to drain out. Reinsert the drain plug and fill the gear reservoir using the upper fill port with ISO 220, SAE 90 food grade gear lubricant until the level can be seen 2/3 of the way up the sight glass. After allowing enough time for the oil to flow to the bottom of the gear case, reinsert the fill port plug and recheck the sight glass for the correct level.



#### Grease

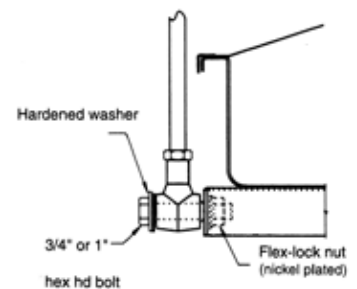
Unscrew the relief plug on each bearing housing or on the remote mount lubrication blocks. This allows the air trapped inside the bearing housing to be released and prevents the new grease from pushing the inner seal off of the shaft. Apply about 1.0 oz of grease through the remote filler block to each of the four bearings. Proper grease for food use should be pharmaceutical grade, mineral oil base, white, HI grease. Reinsert relief plugs.



### SUSPENSION RODS

A periodic check of the suspension rods is required to verify their proper working order. We recommend once every six months. Below are the items to check for:

Make sure that the suspension rod end is held tight between the flanges of the upper suspension hanger and between the conveyor pan and outside washer on the lower connection. The inner race of the bushing should be held firmly between the outer brackets so that all of the rotational movement is taken up by the rubber bushing. **The inner race should not rotate.**

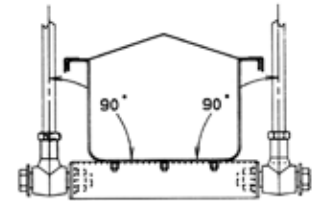
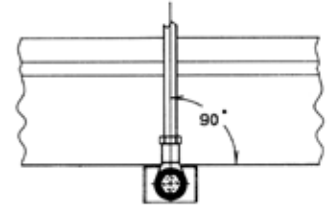




# MAINTENANCE TIPS

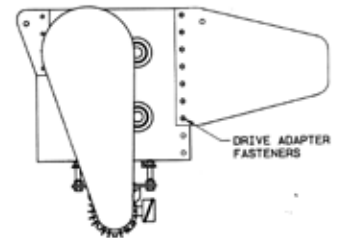
## Slipstick® Horizontal Motion Conveyor

- a. Suspension rods must be perpendicular to the pan in both directions. If misalignment is present then excessive strain may be applied to the suspension bushings causing them to wear. You may also notice that the bushing is warm to the touch. This can be corrected by realigning the rods perpendicular to the pan.
  
- b. Inspect the inside of the rubber bushing for steel burrs which might cut into the rubber. If one is found, replace the bushing.



### DRIVE ADAPTER

Check the tightness of the drive adapter bolts for proper torque. The correct torque to be applied is listed on a plaque on the side of the drive adapter. Drive adapter bolt torques are very critical, a loose connection could cause the drive to work itself free. Please note that the proper torque procedure for the Wizlock nuts utilized on this connection is to hold the nut firmly with a wrench and tighten the bolt to the proper value using a calibrated torque wrench.



Triple/S Dynamics, Inc.  
1031 S. Haskell Avenue ■ Dallas, TX 75223  
Ph. 214-828-8600 ■ 800-527-2116 ■ [www.sssdynamics.com](http://www.sssdynamics.com)