



# MECHANICAL WIRE RECOVERY SYSTEM

## Cross Reference Summary Table



Triple/S Dynamics flexible systems deliver target purity throughput. They're available in expandable systems with capacities of 1,000 2,000 3,000 5,000 8,000 and 10,000 lbs/hr.

A complete, standardized granulation and separation system for reclaiming aluminum and copper from:

- Scrap wire and cable\*
- Heavy gauge copper wire
- Loose copper windings
- Computer wire and precious metal-bearing electrical scrap\*
- CATV cable\*
- Cu/Al radiators
- ACSR
- Thermal barrier aluminum extrusions
- Communications wire\*
- Most harness wire\*
- Copper tubing
- Insulated aluminum cable



	A MRS*	B MUSCLE	C	D	E
BASIC SYSTEMS EQUIPMENT	500 - 1,500 lb/hr (225 - 680 kg/hr)	1,700 - 2,500 lb/hr (771 - 1,134 kg/hr)	4,500 - 5,000 lb/hr (3,410 - 3,860 kg/hr)	7,500 - 8,500 lb/hr (3,410 - 3,860 kg/hr)	10,500 - 12,000 lb/hr (4,770 - 5,455 kg/hr)
Ave. Production Rate (55% Cu content)	850 lb/hr (386 kg/hr)	2,000 lb/hr (907 kg/hr)	4,750 lb/hr (2,155 kg/hr)	8,000 lb/hr (3,629 kg/hr)	11,250 lb/hr (5,103 kg/hr)
Annual Production (1700 hours per shift)					
One Shift	1,445,000 lbs (656,200 kgs)	3,400,000 lbs (1,541,900 kgs)	8,075,000 lbs (3,663,500 kgs)	13,600,000 lbs (6,169,300 kgs)	19,125,000 lbs (8,675,100 kgs)
Two Shifts	2,890,000 lbs (1,312,400 kgs)	6,800,000 lbs (3,083,800 kgs)	16,150,000 lbs (7,327,000 kgs)	27,200,000 lbs (12,338,600 kgs)	38,250,000 lbs (17,350,200 kgs)
Recommended minimum building size	skid size; 6.7W x 18.5L x 7.5 H use space: 21W x 18.5L x 12 H	ft: 40W x 70L x 26H m: 12W x 21L x 6H	ft: 100W x 110L x 26H m: 31W x 34L x 8H	ft: 100W x 135L x 26H m: 31W x 34L x 8H	ft: 110W x 135L x 27H m: 34W x 41L x 8.3H
Approximate connected power	110 HP (82 KW)	375 HP (280 KW)	865 HP (645 KW)	1,150 HP (858 KW)	1,575 HP (1,175 KW)

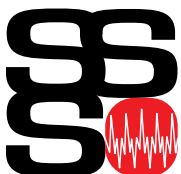
\*See MRS page 3. Recovery of fine copper will be lower with base MRS.

# MECHANICAL WIRE RECOVERY SYSTEM

## Cross Reference Summary Table



EQUIPMENT	A	B	C	D	E
Primary Granulator	24 Husky	24 Husky	48 DFW	48 Super	48 DFW (qty.2)
Feedrolls	none	none	Optional	Optional	Optional
Primary Magnet	optional	24" wide	36" wide	36" wide	42" wide
Secondary Granulator	none	24 Husky S	48 S	48 S (qty. 2)	48 S (qty. 2)
Tertiary Granulator	none	none	WOK 24 Husky	WOK 24 Husky	48 Tertiary
High Speed Screen	3' x 6' Opt.	4' x 8' (2 Deck)	4' x 8' (2 Deck)	5' x 12' (2 Deck)	5' x 12' (2 Deck)
Fines Aspirator	none	M-6 Cross-flow	M-6 Cross-flow	M-8 Cross-flow	Z-22 Fines Floater
Bins	Dual surge bin option	Dual surge bin (75 ft <sup>3</sup> - 2.1 m <sup>3</sup> )	Dual surge bin (75 ft <sup>3</sup> - 2.1 m <sup>3</sup> )	(2) Single surge bins	(2) Single surge bins
Fluidized Bed Separator	BX-110	T-15	T-20	T-20 (qty. 2)	T-20 (qty. 2)
Stoner (Option only)	S-22H	S-22H	S-22H	S-22H (qty. 2)	S-22H (qty. 2)
Fans & Cyclone	5,000 cfm	15,000 cfm	20,000 cfm	27,500 cfm	33,500 cfm
Vibrating Conveyors	2	3	3	6	7
Belt Conveyors	1	1	2	2	3
Elevators	2	4	5	6	6



Triple/S Dynamics, Inc.  
 1031 S. Haskell Avenue ■ Dallas, TX 75223  
 Ph. 214-828-8600 ■ 800-527-2116 ■ www.sssdynamics.com



# MODULAR RECOVERY SYSTEM

Options



A MRS system can supplement or replace an existing sorting and baling operation - giving you the capability of separating higher value products or upgrading many types of non-ferrous scrap. It's a small 'package' granulation and separation system, developed by the leaders in non-ferrous separation equipment, that gives you the maximum processing flexibility at low cost.

Base unit will have lower recovery of fine copper wire.

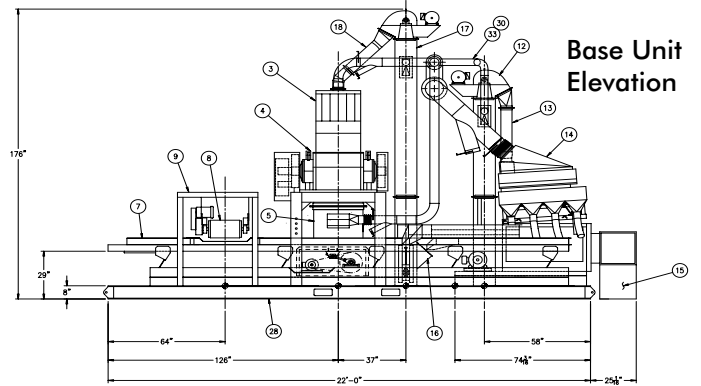
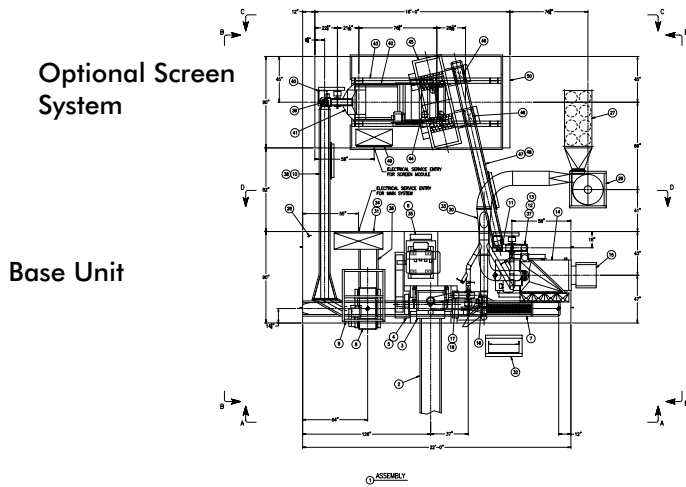
- Note 1, Unless PreChopper is used, requires pre-cutting wire material to small piles laying relatively flat on 18 in. belt. If 2nd granulator used, larger surges can be allowed.
- Note 2, Unless additional granulator or PreChopper is used, requires pre-cutting stiff cable to 8-12 in. lengths, ~2 lbs. max. Increase size 50-100% with 2nd granulator
- Note 3, Elevating conveyors, if desired, for discharge of plastic, copper, ferrous, or dust - not included.
- Note 4, Electrical, exhaust, structures included on Turnkey option only, or as specifically marked.
- Note 5, Granulators can be equipped with 75 hp-150 hp for special applications.



EQUIPMENT	Base Unit Components only	Base Unit Turnkey Option	Screen Option for Fine/Mixed Max. Recovery	Stoner Option for Aluminum	PreChopper Option	2nd Granulator Option	Automatic Baghouse Upgrade
Infeed requirements	pre-cut material	pre-cut material	pre-cut material	pre-cut material	bundled material	pre-cut material see notes 1 & 2	
Ave. Production Rate							
Fine/mixed size' Note 1	700 lb/hr	700 lb/hr	900 lb/hr		2,000 lb/hr	1,500 lb/hr	Replaces manual
Power cable Note 2	1,400 lb/hr	1,400 lb/hr	1,400 lb/hr	1,400 lb/hr.	3,000 lb/hr	2,500 lb/hr	dust collector
Annual Production (1700 hours per shift)					with MRS	with MRS	
One Shift fine/mixed power cable.	1,119,000 lbs	1,119,000 lbs	1,530,000 lbs		3,400,000 lbs	2,550,000 lbs	
Two Shifts fine/mixed power cable.	2,380,000 lbs	2,380,000 lbs	3,060,000 lbs	2,380,000 lbs	5,100,000 lbs	4,250,000 lbs	
Layout Size	23W x 22L x 14H	23W x 22L x 15H	38W x 22L x 14H	4W x 6L x 4H	8W x 10L x 13H	40W x 22L x 14H Granulator 4W x 9L	7W x 11L x 24H
Approximate connected power, includes: TEFC 3/60/460	140 HP note 5	140 HP note 5	150 HP note 5	5 HP	160 HP additional	135 HP additional note 5	10 HP

# MODULAR RECOVERY SYSTEM

Equipment Information



EQUIPMENT	Base Unit 1	Base Unit 2	Screen Option 3	Stoner Option 4	PreChopper 5	2nd Granulator 6	Automatic 7
Granulator	24 Husky DFW	24 Husky DFW	-	-	-	24 Husky DFW	-
Magnet	overhead belt	overhead belt	-	-	optional	optional	-
Secondary Granulator	optional	optional	-	-	-	-	-
High Speed Screen	optional	optional	3' x 6' (2 Deck)	-	-	-	-
Tailings Screen	1' x 3'	1' x 3'	-	-	-	-	-
Storage Bins/Feeders	optional	optional	Dual surge bin (30 ft ^ 3)	-	optional	-	-
Fluidized Bed Separator	BX-110	BX-110	-	-	-	-	-
Fans & Cyclone	5,000 cfm	5,000 cfm	1,000 cfm	-	2,000 cfm	1,000 cfm	8,000 cfm
Vibrating Conveyors	2	2	1 additional	-	1	1	-
Belt Conveyors	1	1	-	-	optional	-	-
					Grapple load is best		
Elevators	2	2	1		-	1	



Triple/S Dynamics, Inc.  
 1031 S. Haskell Avenue ■ Dallas, TX 75223  
 Ph. 214-828-8600 ■ 800-527-2116 ■ www.sssdynamics.com