



GRAVITY SEPARATOR

BX-260



PRODUCT DESCRIPTION

The BX-260 Series Gravity Separator will make a highly sensitive separation of dry, free-flowing, similar sized particle that differ in density or shape. The heavy, rugged running gear of the BX-260 provides a more stable separation platform for improved separations and reduced operating stresses. Better performance and a longer, reduced maintenance operating life make the BX-260 an excellent choice for minimizing operating costs and maximizing product yield and quality.

APPLICATIONS

- Agricultural commodity cleaning
- Seed and oilseed processing
- Cleaning of leafy spices and peppercorns
- Materials reclaim from scrap or waste
- Minerals separations
- Filter media separations



HOW THE S-25 WORKS

The material is fed onto a flat porous deck which is sloped in two directions. Low-pressure air is forced through the deck to fluidize and stratify the material bed. A vibrating action is applied to the deck to convey the heavier particles, which have sunk to the bottom of the material bed, up the inclination of the deck. Lighter particles are suspended in the rising airflow and slide down the slope of the deck.



The final result, presented at the discharge face of the deck, is a continuous gradation of material from the densest, largest particles to the lightest, smallest particles. Adjustable diverters, which are installed in the discharge chutes, are set to split off light or dense materials, with often a mixed 'middlings' fraction for re-treatment.

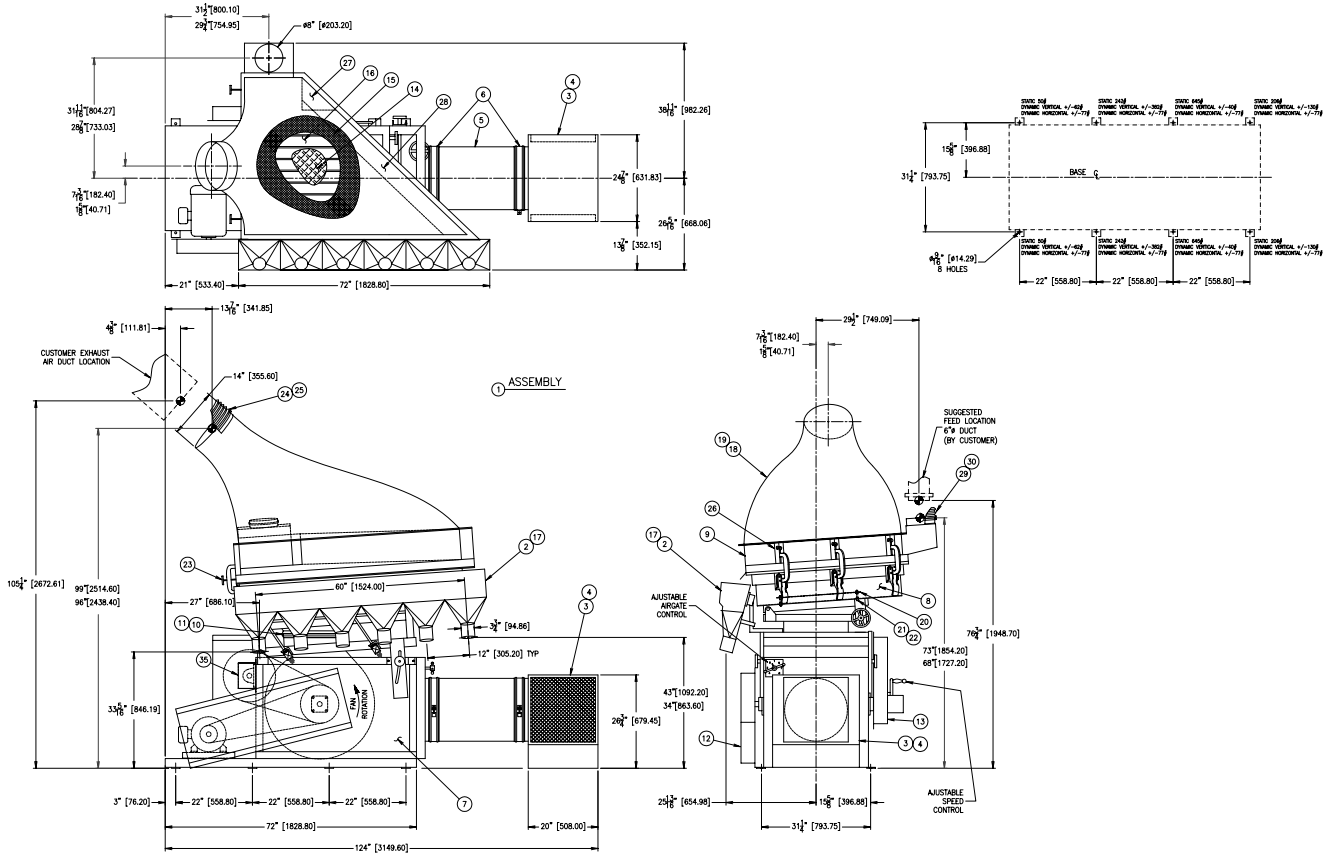
Equipped with an integral supply air blower, exhaust hood, and slide-out deck panel, the BX-260 offers superior separation performance in a compact, economical design. Simplified and rugged controls assure that machine settings will be trouble-free and drift-free.

Drawing on next page.



GRAVITY SEPARATOR

BX-260



Triple/S Dynamics, Inc.
 1031 S. Haskell Avenue ■ Dallas, TX 75223
 Ph. 214-828-8600 ■ 800-527-2116 ■ www.sssdynamics.com