

SLIPSTICK CONVEYORS

Dust free conveying



- Sealed pan with no moving parts.
- Reduced exhaust air requirements, if any.
- Reduced wear - reduced maintenance.
- Reduced cleanup in plant and environment.

Slipstick[®]

Horizontal Differential Motion conveys bulk materials of many types and sizes

- Abrasive materials are handled with AR plate and low rates of wear
- Friable products are not degraded while being conveyed.

Capabilities

- Fine or Coarse material
- 10-200+ feet
- Widths and depths matching surge requirements
- Capacity for 150+ tph of 100 pcf
- < 2 degrees uphill
- Can be choke fed



Slipstick®

Pan options.

- Based on material and access needs, the conveyors can have;
 - AR liners in a formed pan with top access
 - Bottom plate bolted on for bottom access
 - Access both top and bottom

Divided lanes or separate pans can even be powered by a single drive. This allows for total separation of different products.

Slipstick[®]

Variable Speed and Dual Direction Conveying

- Travel rate varies with motor speed.
- Dual Direction by changing motor direction.
 - No cost option with 25% reduction of capacity
 - Optional immediate direction change with electric/pneumatic signal.

Top and Bottom Access

- Inspection and optional wear liners can be accessed from bolted covers >



- or liners replaced from bolted bottom pan below <

Drive Locations

- Integral drives are bolted directly to the pan.
 - Feed or discharge end locations.
 - Under or over-mount locations for small and medium conveyors
 - Split drive configurations for large conveyors.



Suspension Requirements

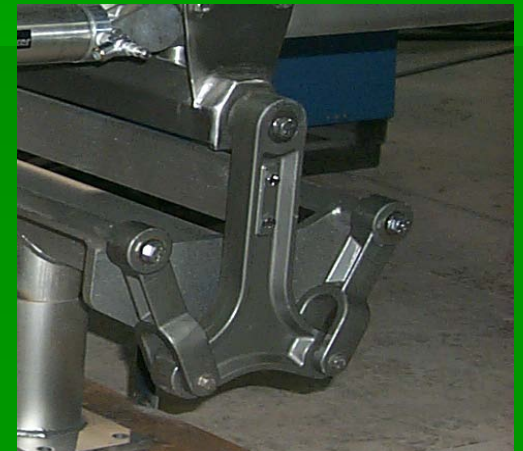


- Supports required at drive and every 10-20 ft along the pan.
- Standard arrangement is rod with rubber bushings on each end. These typically last 5+ years with out maintenance or further adjustment.

Slipstick[®]

Horizontal Motion suspension options

- Suspension rod from overhead support or support built up from level below. Rods are typically 2-6 ft. long. Required at drive.
- Inverted Rod for pan support from level below. Typically 3-6 ft. long. 12 ft. limit.
- Linkage support for limited height applications. This has a weight limitation for smaller pans and drives.



Contact Triple/S Dynamics for more information and capabilities

Matt Mayo, Applications
800 527 2116 ext 678

mmayo@sssdynamics.com
sales@sssdynamics.com
www.sssdynamics.com

1031 S. Haskell Ave.
Dallas, TX 75243

Slipstick[®]